

# LOOKBOOK

SPRING/SUMMER

**MG**

GARMENT DIVISION

[WWW.MOHAMMADIGROUP.COM](http://WWW.MOHAMMADIGROUP.COM)



---

<b>ABOUT</b> Mohammadi Group Garment division Established in 1986 by Anisul Huq.	<b>04</b>
<b>OUR MANAGEMENT</b>	<b>06</b>
<b>OUR FACTORIES</b> Centrally managed planning. Explore our capacity in Woven, Knitwear and Lingerie.	<b>08</b>
<b>OUR CLIENTS</b> Growing network of relationships around the world	<b>10</b>
<b>SOCIAL WELFARE</b> Our company culture and our commitment to our employees.	<b>12</b>
<b>ENVIRONMENTAL INITIATIVES</b> Our certifications and growing commitment towards sustainability.	<b>14</b>
<b>SPRING SUMMER 21</b> Mohammadi's debut collection and our sustainable approach	<b>16</b>
<b>MEN'S</b>	<b>24</b>
<b>WOMEN'S</b>	<b>50</b>
<b>KIDS</b>	<b>78</b>

## MOHAMMADI GROUP'S GARMENT DIVISION

Mohammadi Group's Woven division was established in 1986 by the founder Mr Annisul Huq. MG has since grown into a renowned conglomerate in Bangladesh with projects in real estate, power generation to the national grid, software development, digital television, television channel and has over 10,000 employees.

Mr Huq passed away in 2017 while serving as the Mayor of North Dhaka. His family and colleagues have since continued to manage operations. The garment division specialises in mainly men's casual & formal shirts, ladies' tops, kidswear, lingerie and sweaters.

The entire group has an annual turnover of \$ 100 million of which garments contributes \$75 million.

### OUR CAPACITY:

#### WOVEN

32 LINES

900,000 – 1,000,000  
PIECES MONTHLY

#### LINGERIE

8 LINES

1-1.2 MILLION  
PIECES MONTHLY

#### SWEATERS

275,000 – 300,000  
PIECES MONTHLY

# OUR MANAGEMENT



**RUBANA HUQ**  
MANAGING DIRECTOR



**NAVIDUL HUQ**  
DIRECTOR



**TANISHA HUQ**  
DIRECTOR



**WAMIQ UMAIRA**  
DIRECTOR

# MG LOCATIONS



**MG NICHE STITCH LTD.**  
ESTABLISHED 2016  
3929, Dogri, Banglabazar,  
Mirzapur, Gazipur 1703,  
Bangladesh

**MG SHIRTEX LTD.**  
ESTABLISHED 2005  
31/1, Laxmipura, Chandana, Joydebpur,  
Gazipur 1700, Bangladesh

**MG NICHE FLAIR LTD.**  
ESTABLISHED 2016  
1315, Godnail, Bhuiyanpara,  
Siddhirganj, Narayanganj 1430  
Bangladesh

**MG NICHE FLAIR LTD.**  
ESTABLISHED 2012  
340/1, Vill: Dighiborabo,  
PO: Jatramura, PS: Rugganj,  
Narayanganj 1360, Bangladesh

**MG NICHE FLAIR LTD.**  
ESTABLISHED 2017  
1315, Godnail, Bhuiyanpara,  
Siddhirganj, Narayanganj 1430  
Bangladesh

**THE MOHAMMADI LTD.**  
ESTABLISHED 2005  
KA/52/A, Khilket, Khapara,  
3rd Floor, Dhaka 1229, Bangladesh

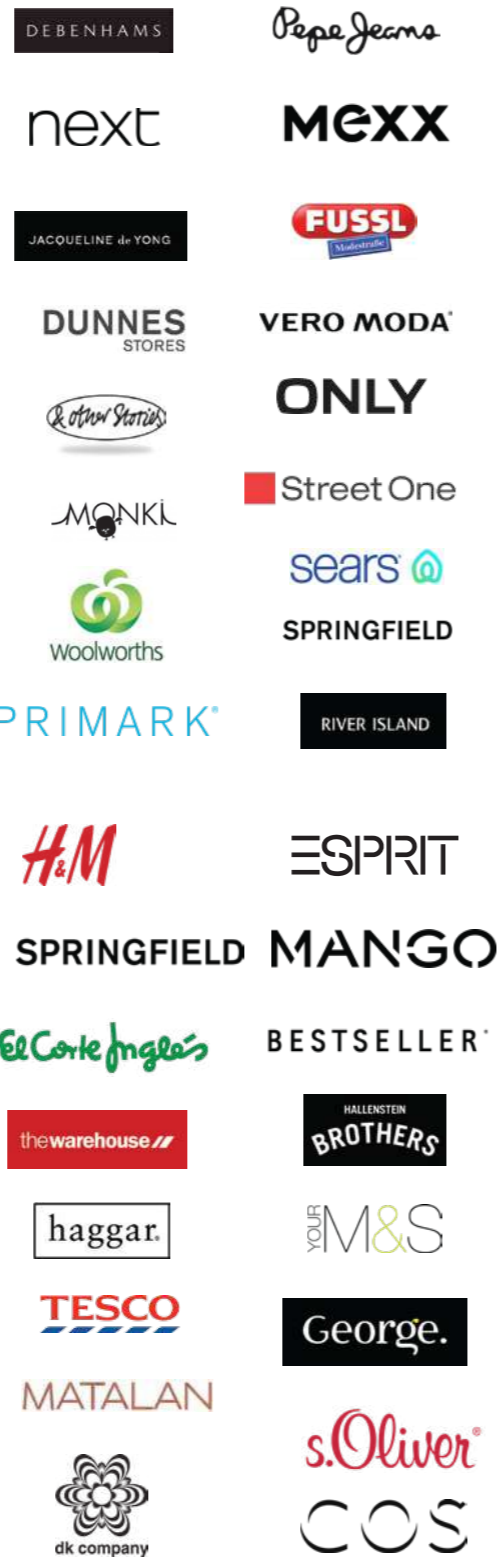
**MOHAMMADI FASHION SWEATERS LTD.**  
ESTABLISHED 2002  
KA/52/A, Khilket,  
Dhaka 1229, Bangladesh

**MG KNIT FLAIR LTD.**  
ESTABLISHED 2005  
1/219, Mahona Bhabanipur,  
Gazipur Sadar, Gazipur 1703, Bangladesh

**MOHAMMADI SWEATER SAMPLE LTD.**  
ESTABLISHED 2005  
KA/52/A, Khilket, Khapara,  
3rd Floor, Dhaka 1229, Bangladesh

## OUR CLIENTS

Over the years we have built relationships with many valuable businesses



## SOCIAL WELFARE

### EDUCATION

+ Free schooling is provided by Sharaf'er Patshala for children of workers' and staff children at MG Shirtex and MGNSL (Banglabazaar). Currently, we are subsidizing 9 students to pursue higher education at the Asian University for Women. In addition to tuition, these students receive what would have been their monthly income should they continue to work, and we are also providing their living costs and educational expenses (such as purchase of laptops) + Skill Development Centre at MGNSL (Banglabazaar). It has been approved by Bangladesh Technical Education Board.

### RECREATION

+ Annual Cultural Programs are held in each factory where employees showcase their talents.

### GENDER CONSCIOUS PROJECTS

+ Empowering Women RMG (3C) Project (CARE Bangladesh)  
+ Gender base violence project (SOJAG SATHI SNV)

### BONUS

+ Monthly and annual attendance bonuses have been an established practice, prior to this becoming the law.

### FAIR PRICE

+ Fair Price Shop available for workers at Banglabazaar. Workers can purchase cosmetics and groceries at 10-15%

### HEALTH

+ In conjunction with Doctor Bari (Edison Healthcare), we have provided free diagnosis tuberculosis, breast cancer & test of CBC, and WBC.

## PROJECTS UNDERTAKEN/ONGOING WITH BUYERS

- + Fair Wage Project (H&M)
- + Better business for children (UNICEF)
- + Promotion of Social & Environment Standard (CDD)
- + Zero Thread Project (H&M)
- + Model line project (H&M)
- +GCP (Global capacity project (H&M)
- + Social Dialogue Project (H&M)
- + Sudokkho Bangladesh (Primark)
- + Better Work Project



## ENVIRONMENTAL INITIATIVES

**+ Solar panel installation**  
ongoing in 2 factories to reduce 0.7 percent energy usage.

**+ VRV system** purchased and installed in main factory in order to reduce energy consumption by 50 percent.

**+ Machines are being diverted from clutch motor to servo motor** to reduce energy consumption by 60 percent.

**+ Already conducted Environmental Impact** assessment (EIA) to identify the significant environmental impact of our current operations.

**+ Engaged in H&M NEST project** in one factory to reduce Energy and GHG emissions.

**+ Long term strategy** being put in to minimize the significant environmental impact and reduce energy use, GHG emissions, save water and reduce waste.

**+ Push taps installed** at main factory to reduce water usage. Toilet flush installed at main factory to reduce water wastage by two thirds.

**+ All installed lighting is LED**, which reduces energy consumption by 45 percent.

## WE'RE CERTIFIED









## INTRODUCTION

Mohammadi Group is introducing its debut collection selectively curated for the modern consumer. For this season and zeitgeist our design team focused around the idea of casual power dressing.

As a testament to high summer this collection consists of elevated summer basics. Think of breezy silhouettes with playful details, everyday shirts, tops and dresses that will take you from morning to evening.

In an effort to pave new ways of consuming fashion sustainably, parts of this collection were created using dead-stock. Our creative team has meticulously gone through our fabric stock inventory and put together a beautiful selection of sustainable options. Soft and breathable linens, crisp cottons and vibrant prints. Denim focused pieces paired with accents of lightweight tie-dye fabrics. Each piece has been developed and produced with high craftsmanship from our Bangladesh headquarters.



CALIFORNIA DESERT



MEDITERRANEAN SUMMER



INDIGO TIE-DYE

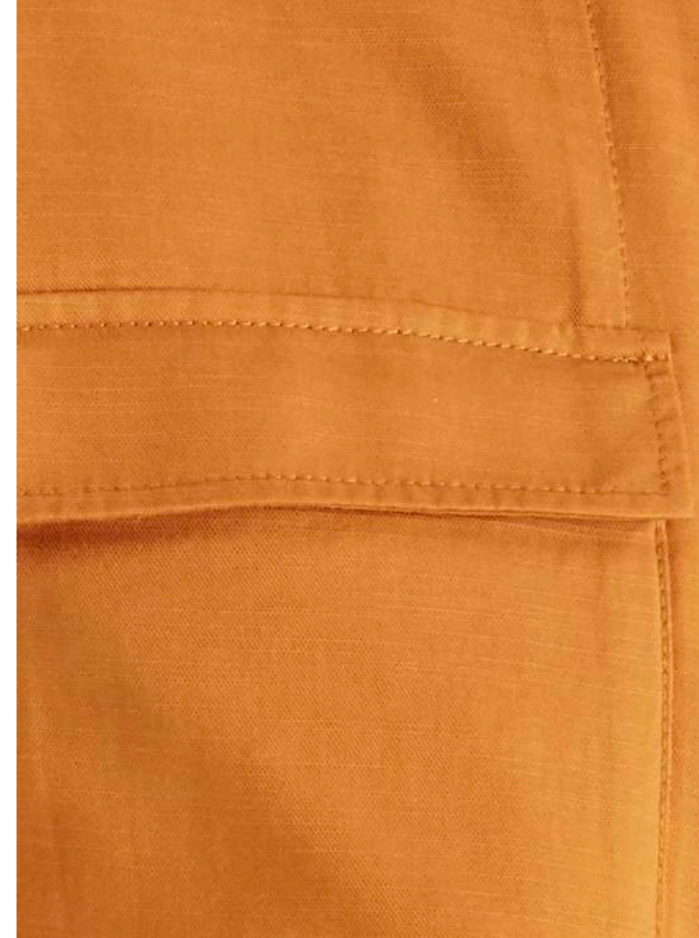


# MEN'S



26

INTRODUCTION



Relaxed-fit lightweight jacket. The 'Dinos' jacket is cut from sleek viscose slub in a boxy-shape. Inspired from workwear it is unlined, featuring a front metal zip fastening with top-stitch details and graphic patch pockets.



DINOS



27

INTRODUCTION



SKU: SS21\_W56\_DINOS\_JACKET  
FABRIC: SS21\_MUSTVISCTW  
COMPOSITION: 100% VISCOSE SLUB

## BONO



Camp-collar short sleeve shirt. Our 'Bono' shirt is cut from printed viscose in a boxy shape. It's relaxed fit is enhanced by side slits.

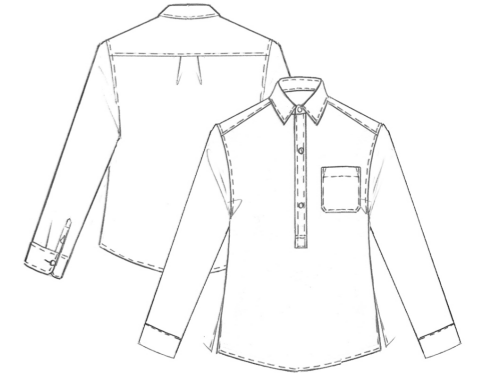


**SKU:** SS21\_W35\_BONO\_SS SHIRT  
**FABRIC:** SS21\_TROPICALVISC  
**COMPOSITION:** 100% VISCOSE AOP

## JESSIE



Relaxed-fit contrast-stitch workwear shirt. The 'Jessie' shirt is cut from crisp cotton twill in a relaxed boxy-shape. Inspired from workwear it features contrast white stitch detailing, a short placket and side-slits.

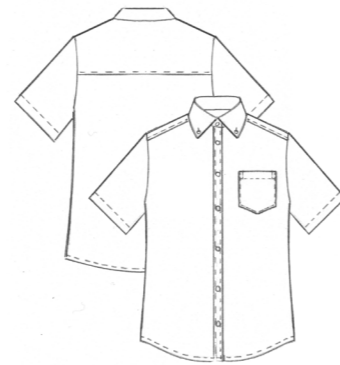


**SKU:** SS21\_W44\_JESSIE\_LS SHIRT  
**FABRIC:** SS21\_OLIVETWILL  
**COMPOSITION:** 100% COTTON

## DIMI



Regular-fit Button-down collar short sleeve shirt. The 'Dimi' shirt is made from mid-weight cotton Oxford. Designed for a regular fit with a patch pocket.

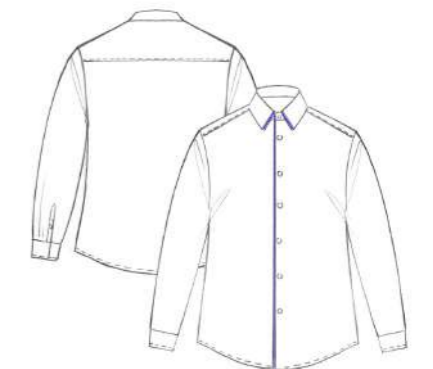


**SKU:** SS21\_W37\_DIMI\_SS SHIRT  
**FABRIC:** SS21\_PEACHOX  
**COMPOSITION:** 98% COTTON, 2% SPANDEX

## MAT



Regular fit long sleeve shirt. Our 'Mat' shirt is cut from light cotton/viscose blend. A holiday look it features a colourful Hawaiian print with contrast navy piping along the front collar and placket.



**SKU:** SS21\_W54\_MAT\_LS SHIRT  
**FABRIC:** SS21\_TROPICALEAFPR  
**COMPOSITION:** 70% COTTON, 27% POLYESTER

# BAILEY

DEADSTOCK

Slim-fit Linen blend shirt. Our 'Bailey' shirt is cut from melange linen in an elegant lavender colour. Designed for a semi-slim fit it features a cutaway collar, rounded cuffs and a softly curved hem. The shirt has two back pleats.

**SKU:** SS21\_W47\_BAILEY\_LS SHIRT  
**FABRIC:** SS21\_LAVENDERLIN  
**COMPOSITION:** 65% LINEN, 35% COTTON



# BOBBY



Slim-fit Button-down short sleeve shirt. Our 'Bobby' shirt is cut from breezy basket-weave cotton in a smart fit. Designed with a sleeve turn up and a buttoned pocket. Inner placket and collar are discretely lined in check pattern.



DEADSTOCK

**SKU:** SS21\_W52\_BOBBY\_SS SHIRT  
**FABRIC:** SS21\_SMOOTHCOTLUX  
**COMPOSITION:** 100% COTTON

DEADSTOCK



## KEVIN



Slim-fit short sleeve shirt. The 'KEVIN' shirt is a holiday wardrobe classic. It is cut from lightweight stripe linen with two back darts for a smart fit. The shirt has a patch pocket and inner placket tape-ribbon detailing.



**SKU:** SS21\_W49\_KEVIN\_SS SHIRT

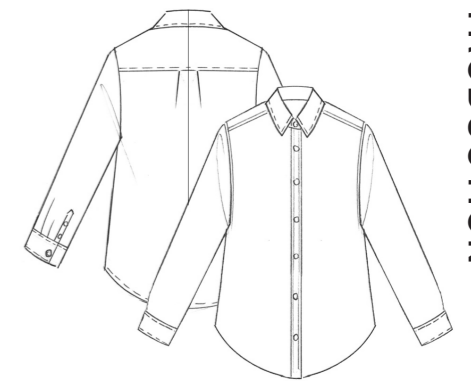
**FABRIC:** SS21\_SANDPINSTR

**COMPOSITION:** 65% LINEN, 35% COTTON

## ALEXIS



Regular fit long sleeve flannel shirt. Our 'Alexis' shirt is cut from a combination of flannel check fabric making a bold statement. Designed for a regular fit it features a box pleat at the back for more room.



**SKU:** SS21\_W40\_ALEXIS\_LS SHIRT

**FABRIC:** SS21\_MIXTARTANFL

**COMPOSITION:** 100% COTTON

## ANDY

Oversized grandad-collar long sleeve shirt. Our 'Andy' shirt is cut from burgundy/cream stripe cotton and designed with an oversized feel. It's relaxed fit is enhanced by side slits and a patch pocket at the chest.



**SKU:** SS21\_W41\_ANDY\_LS SHIRT

**FABRIC:** SS21\_CRIMSONSTR

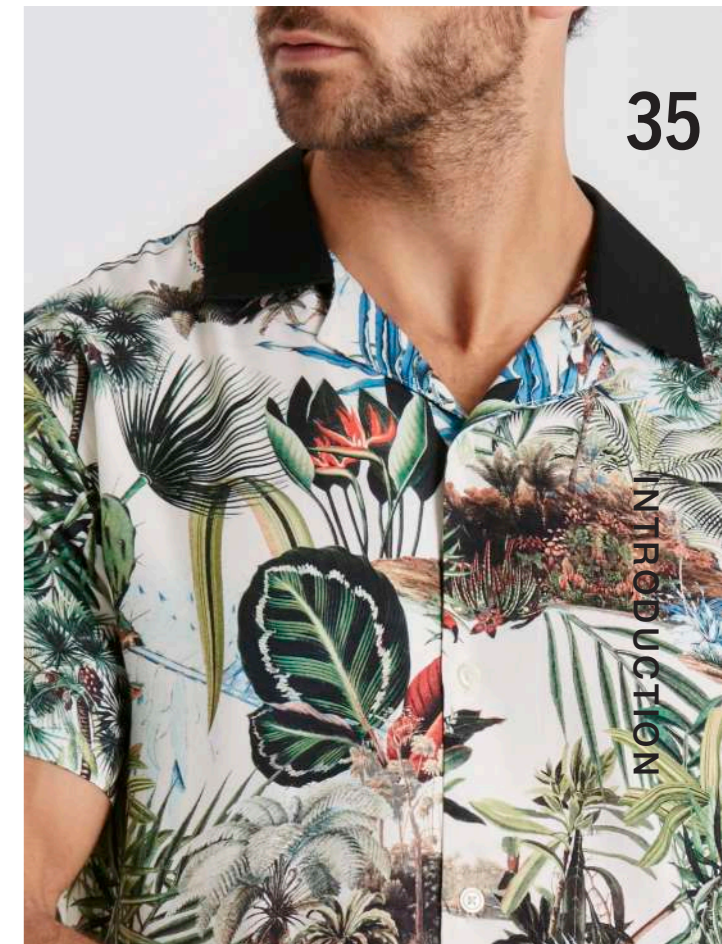
**COMPOSITION:** 100% COTTON



Camp-collar short sleeve shirt. Our 'Samie' bowling shirt is cut from printed viscose and features a contrast black collar. It's relaxed fit is enhanced by side slits.



SAMIE



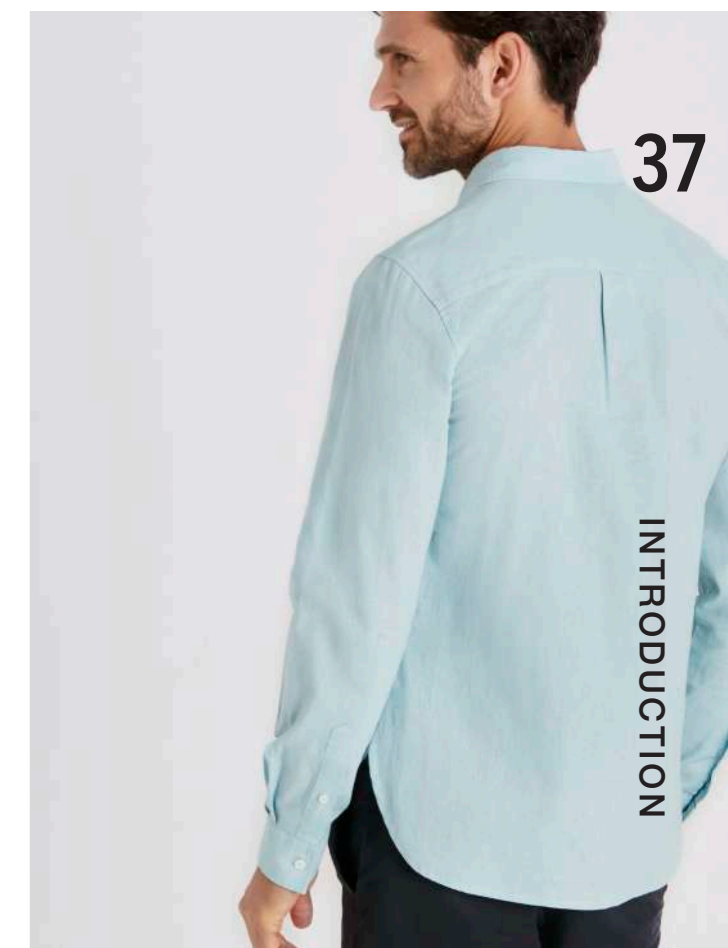
**SKU:** SS21\_W42\_SAMIE\_SS SHIRT  
**FABRIC:** SS21\_BLUTROPICALVISC  
**COMPOSITION:** 100% VISCOSE AOP



Slim fit cotton Oxford shirt. Our 'Alex' shirt is cut from crisp cotton Oxford in a beautiful aqua colour. Designed for a refined slim-fit it features a softly curved hem and a box pleat at the back for more room.



ALEX



SKU: SS21\_W51\_ALEX\_LS SHIRT  
FABRIC: SS21\_AQUAOXF  
COMPOSITION: 55% LINEN, 45% COTTON

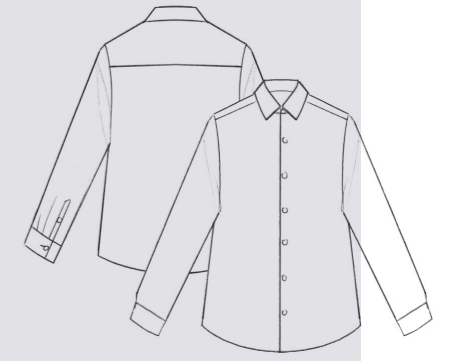
## ANDERS



Regular-fit button-down contrast-stitch shirt. Our 'ANDERS' shirt is cut from smooth cotton-poplin with navy stitch button holes. The interior collar and cuffs are lined with blue stripe cotton for a nautical feel.



**SKU:** SS21\_W50\_ANDERS\_LS SHIRT  
**FABRIC:** SS21\_WHITECOTLUX  
**COMPOSITION:** 100% COTTON



## JEREMY

Regular fit long sleeve shirt. Our 'JEREMY' shirt is cut from light breathable stripe cotton. Designed for a modern city look it's collar and cuffs are made in white poplin.



**SKU:** SS21\_W38\_JEREMY\_LS SHIRT  
**FABRIC:** SS21\_BLUPENCILSTR  
**COMPOSITION:** 100% COTTON

38

## TONY



Slim-fit Linen shirt. Our 'Tony' shirt is cut from lightweight, breathable melange linen. Designed for a slim fit it features a modern cutaway collar, rounded cuffs and a softly curved hem.



**SKU:** SS21\_W45\_TONY\_LS SHIRT  
**FABRIC:** SS21\_PINKLIN  
**COMPOSITION:** 65% LINEN, 35% COTTON

39

INTRODUCTION

INTRODUCTION



## LUCAS

Relaxed-fit tie-dye overshirt. The 'Lucas' shirt is cut from tie-dye cotton in a boxy-shape. Inspired from workwear it features chest pockets and metal press-stud buttons. It's softly rounded hem gives it a refined casual look.

**SKU:** SS21\_W69\_LUCAS\_JACKET

**FABRIC:** SS21TDBLUSTONE

**COMPOSITION:** 100% COTTON

## DYLAN

Casual button-down colour-block shirt. Our 'Dylan' shirt is cut from combination cotton denim. Featuring a button-down collar with a contrast chest pocket and back yoke it has a modern preppy look.



**SKU:** SS21\_W71\_DYLAN\_SS SHIRT  
**FABRIC:** SS21DENIMIX  
**COMPOSITION:** 100% COTTON

## NEITH



DEADSTOCK

Casual tie-dye short sleeve shirt. Our 'Neith' shirt is cut from tie-dye cotton and has a comfortable fit. Inspired from workwear it features a relaxed collar, chest pockets and metal press-stud buttons.

**SKU:** SS21\_W70\_NEITH\_SS SHIRT  
**FABRIC:** SS21TDVERDESTONE  
**COMPOSITION:** 100% COTTON





Regular fit chambray overshirt. Our 'Dennis' overshirt is cut from soft cotton chambray. Designed for a smart city look it has a relaxed shape that is enhanced by two small back pleats.



44

INTRODUCTION

DENNIS



45

INTRODUCTION

SKU: SS21\_W57\_DENNIS\_OVERSHIRT  
FABRIC: SS21\_CHAMBRAYBLU  
COMPOSITION: 100% COTTON

## BONO



**SKU:** SS21\_W48\_BONO\_SS SHIRT  
**FABRIC:** SS21\_BLUOCLIN  
**COMPOSITION:** 65% LINEN, 35% COTTON

Camp-collar short sleeve shirt. Our 'Bono' shirt is cut from lightweight, breathable cotton/linen in a boxy shape. Its relaxed fit is enhanced by side slits.



## SEB

Casual spread-collar short sleeve shirt. The 'Seb' shirt is cut from soft cotton denim. Designed for a semi-slim fit it has a graphic block-colour chest pocket.

**SKU:** SS21\_W73\_SEB\_SS SHIRT  
**FABRIC:** SS21SERGEDENOC  
**COMPOSITION:** 100% COTTON

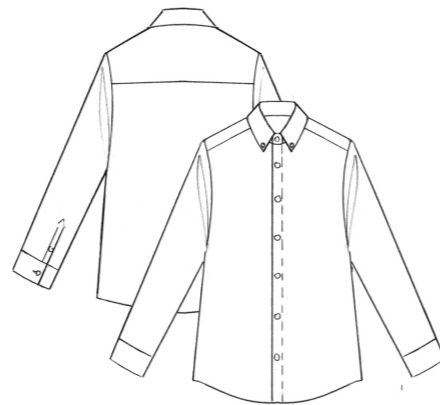
46

## CALEB



**SKU:** SS21\_W74\_CALEB\_LS SHIRT  
**FABRIC:** SS21DPDYEGING  
**COMPOSITION:** 100% COTTON

Regular-fit button-down long sleeve shirt. Our 'Caleb' shirt is cut from gingham check cotton in a regular fit. Designed using a dip-dyed colour it has a cool degrade effect.



47

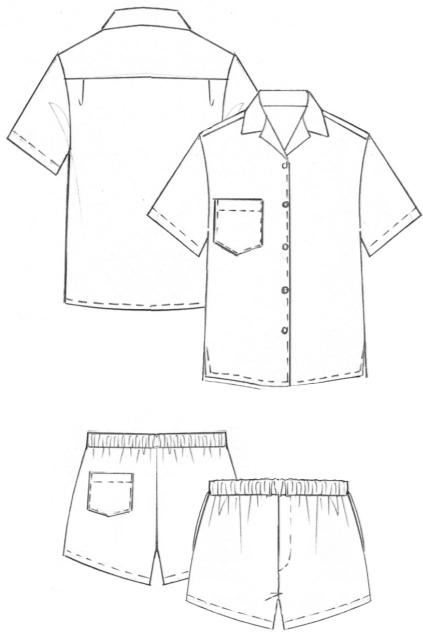
INTRODUCTION

INTRODUCTION



DEADSTOCK

48



**SALVO**

Men's Pijama set. Our 'Salvo' pijama set is cut from printed cotton in a boxy shape. Camp-collar short sleeve shirt with a relaxed fit and a front chest pocket. Matching boxers.

**SKU:** SS21\_W46\_SALVO\_PJS  
**FABRIC:** SS21\_BAROQUEGEO  
**COMPOSITION:** 70% COTTON, 27% POLYESTER, 3% SPANDEX

INTRODUCTION



49

INTRODUCTION

50

# WOMEN'S

WOMENS

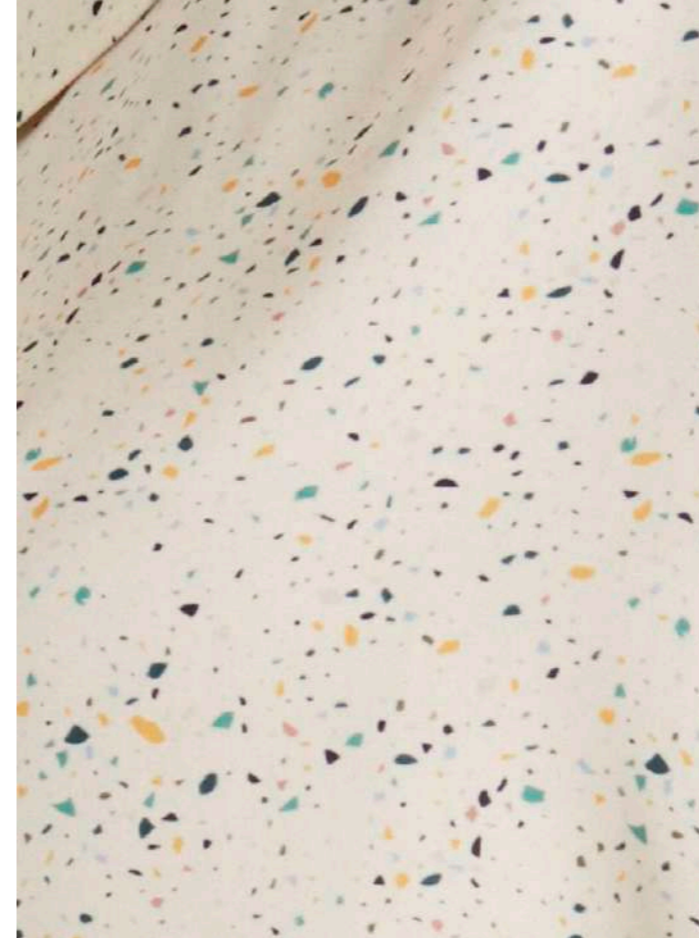


51

WOMENS

52

WOMENS



Camp collar short sleeve shirt. Our 'Hannah' top is cut from printed satin. Relaxed and slouchy t-shirt sleeve with gathered volume at the shoulder for blouson. Button through with softly rounded collar. A retro-inspired elegant basic.



HANNAH



53

WOMENS



**SKU:** SS21\_W12\_HANNAH\_TOP  
**FABRIC:** SS21\_SCATTERSAT  
**COMPOSITION:** 100% POLYESTER

ZOE



DEADSTOCK

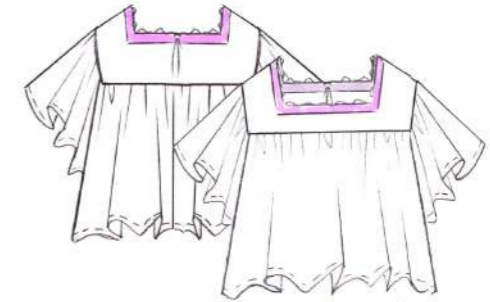
Linen blend tunic shirt. Our 'Zoe' tunic is made from melange linen and has a loose fitting, elegant cut. Front half placket with concealed buttons. Back yoke with box pleat. Dropped shoulder relaxed fit with

**SKU:** SS21\_W14\_ZOE\_TUNIC  
**FABRIC:** SS21\_KHAKILINEN  
**COMPOSITION:** 65% LINEN, 35% COTTON



## SYLVI

Square neck crop top. The 'Sylvi' top is made from cotton broderie anglaise and has a boxy cut. Flared waterfall sleeves give this style a playful summer feel. High square neck framed with cotton trim.



DEADSTOCK

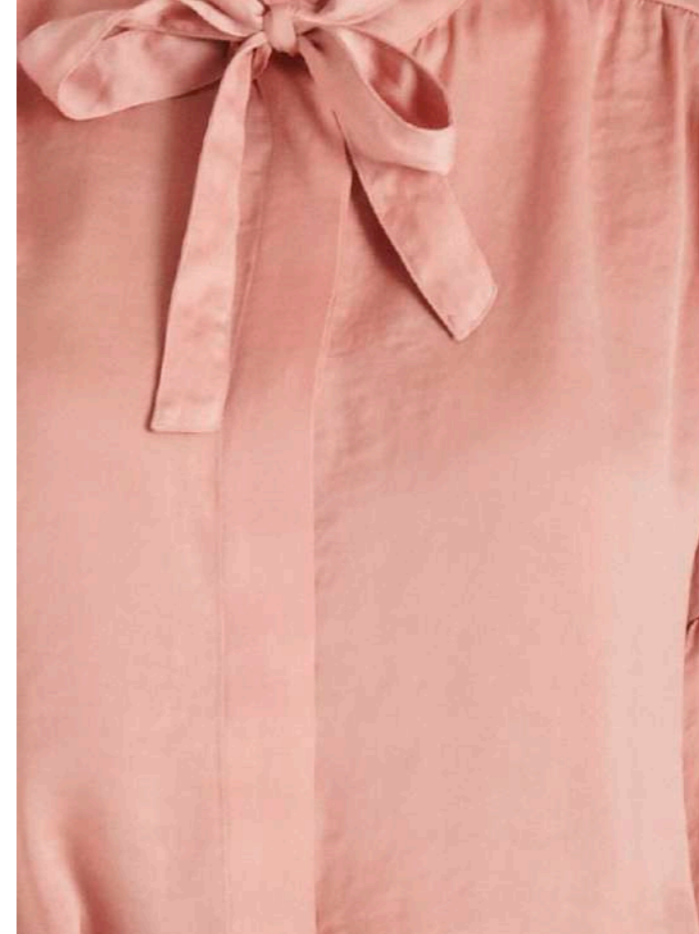
**SKU:** SS21\_W65\_SYLVI\_TOP  
**FABRIC:** SS21\_GEOBROD  
**COMPOSITION:** 100% COTTON

54

WOMENS

55

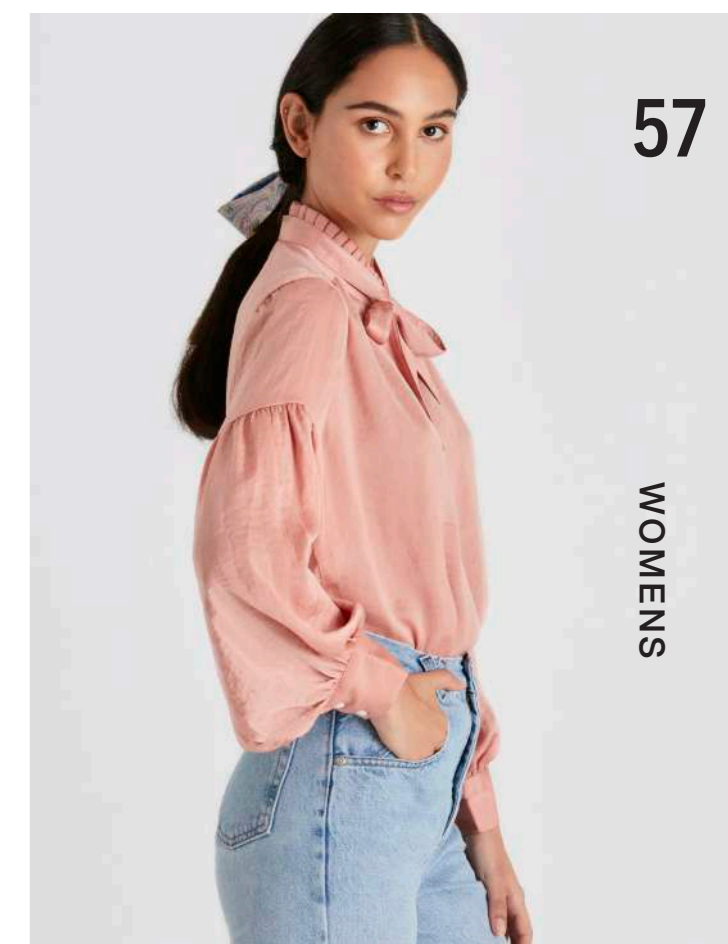
WOMENS



Rose-peach satin blouse. Our 'Evita' blouse is vintage inspired and made in a silk-like fabrication of hammered satin. Flattering and feminine it features a delicate pleated frill around the collar with ties. Relaxed fit with blouson sleeves and a concealed button fastening through front.



EVITA



SKU: SS21\_W9\_EVITA\_SHIRT  
FABRIC: SS21\_ROSEPEACHSAT  
COMPOSITION: 100% POLYESTER

## STEVIE



DEADSTOCK

V-neck tie front blouse. Our 'Stevie' top is made from crisp printed cotton. Featuring a boho silhouette it has voluminous billowing sleeves with a semi-fitted bodice. Ties that can be knotted around the waist.



**SKU:** SS21\_W18\_STEVIE\_TOP  
**FABRIC:** SS21\_BWGEODITSY  
**COMPOSITION:** 70% COTTON, 27% POLYESTER, 3% SPANDEX

58

## CAROLE



DEADSTOCK

Tie-neck Caftan Dress. Our 'Carole' dress is made from sheer viscose in a geometric boho print. It is loose fitting and floatie with voluminous sleeves that have shirred elasticated cuffs.

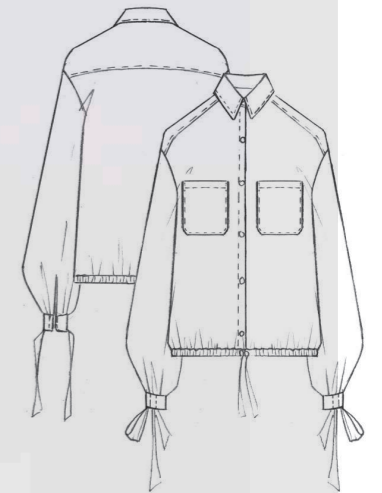


**SKU:** SS21\_W19\_CAROLE\_TUNIC  
**FABRIC:** SS21\_DMNDPAISLEY  
**COMPOSITION:** 100% POLYESTER

WOMENS



DEADSTOCK



## TAMMY

Long sleeve viscose shirt. Our 'Tammy' shirt is cut from printed floral viscose. Button down shirt with patch pockets. Drawstring channel at the hem. Buttoned cuffs with ties that can be knotted or left draped.

**SKU:** SS21\_W21\_TAMMY\_SHIRT  
**FABRIC:** SS21\_FADEDFLORAPOLY  
**COMPOSITION:** 20% COTTON, 80% POLYESTER

59

WOMENS

60

WOMENS



Long sleeve Linen Dress. Our 'Brenda' dress is made from lightweight stripe linen. It's cut for a loose, roomy fit with bubble shape sleeves. Neckline with fringe tassel tie detail. The alternating stripe orientation. Upper calf length.

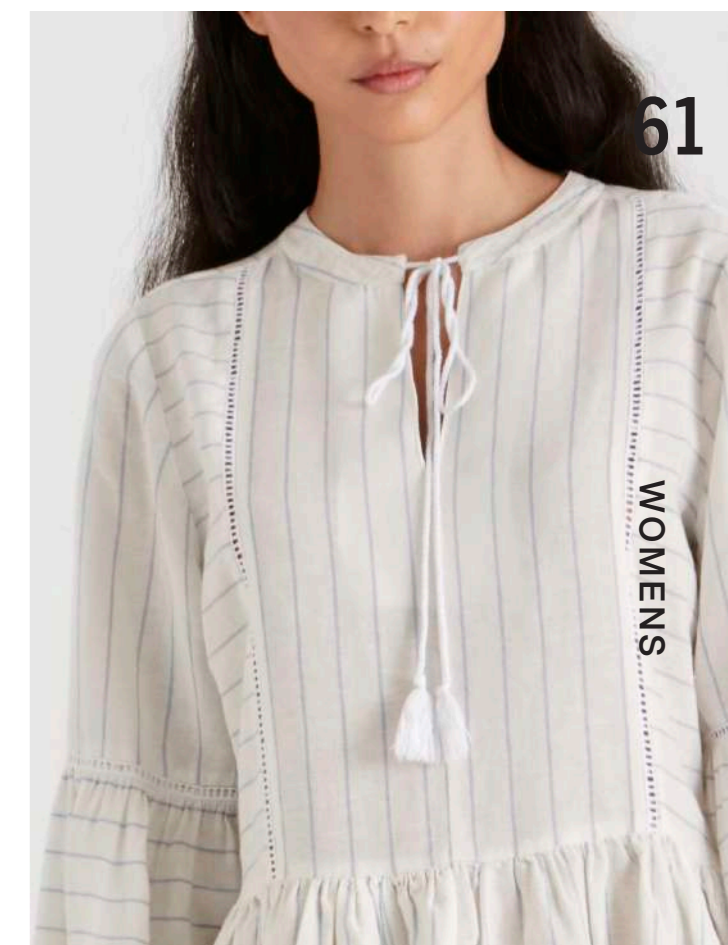


BRENDA

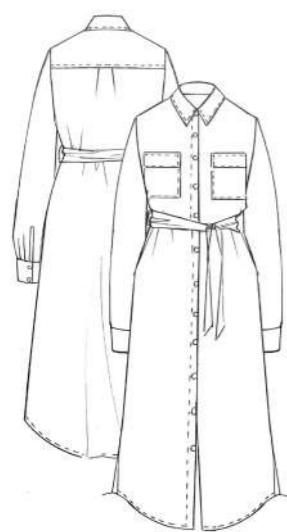


61

WOMENS



**SKU:** SS21\_W24\_BRENDA\_DRESS  
**FABRIC:** SS21\_SKYSTRLIN  
**COMPOSITION:** 65% LINEN, 35% COTTON



## ZELDA

Linen Shirdress. The 'Zelda' shirt dress is made from soft melange linen. Easy-cut with a button-down placket, it be belted for a more smart look. Featuring a softly curved hemline that gently dips at the back. Side pockets enhance it's relaxed feel.

**SKU:** SS21\_W66\_ZELDA\_DRESS

**FABRIC:** SS21\_SANDLINEN

**COMPOSITION:** 65% LINEN, 35% COTTON



64

WOMENS



Satin button down shirtdress.  
 The 'Lisa' dress is made from lustrous printed satin. Open collar with front button down fastening. Designed for a relaxed silhouette with a dropped shoulder and short sleeves. Pull through channel at the waist to. Knee length.



LISA



65

WOMENS



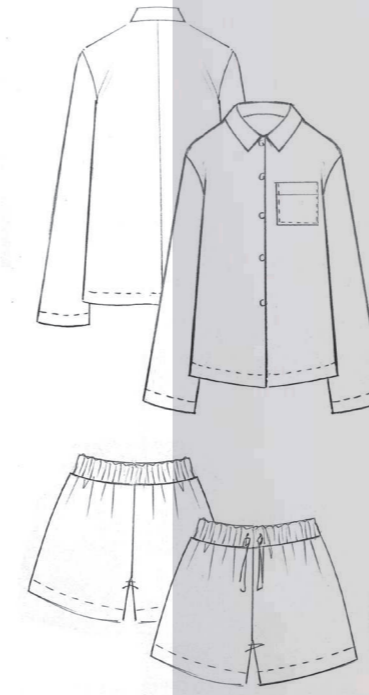
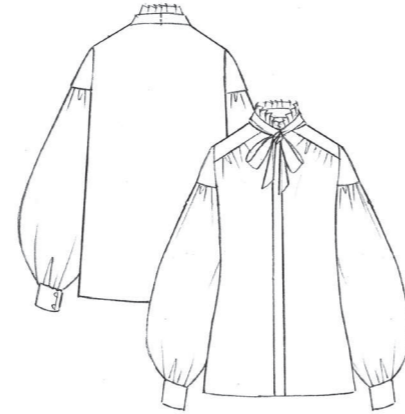
**SKU:** SS21\_W4\_LISA\_DRESS  
**FABRIC:** SS21\_PASTELPAISLEY  
**COMPOSITION:** 100% POLYESTER

## EVITA



**SKU:** SS21\_W64\_EVA\_SHIRT  
**FABRIC:** SS21\_PANALINEN  
**COMPOSITION:** 65% LINEN, 35% COTTON

Linen-blend blouse. Our 'Eva' blouse is vintage inspired and made from soft cotton-linen blend. Flattering and feminine it features a delicate pleated frill around the collar with ties. Relaxed fit with blouson sleeves and a concealed button fastening through front.



66

## LOULOU



**SKU:** SS21\_W3\_LOULOU\_SKIRT  
**FABRIC:** SS21\_MIXBLUSTR  
**COMPOSITION:** 3% POLYESTER, 97% COTTON

Pinstriped tiered skirt. The 'Loulou' skirt is made from pinstriped cotton. Gathered at the waist it features a playful tiered hem. Alternating orientations of the stripes give this style a breezy silhouette. Pull on elasticated waist. Maxi length.



## LYS

Women's Long Pijama set. Our 'Lys' pijama set is made from breathable lightweight stripe linen. The set features a long sleeve button through shirt with a neat collar and matching boxer shorts with a pull through waist.

**SKU:** SS21\_W66\_LYS\_PJS  
**FABRIC:** SS21\_NIGHTPINSTR  
**COMPOSITION:** 65% LINEN, 35% COTTON



WOMENS

WOMENS



68

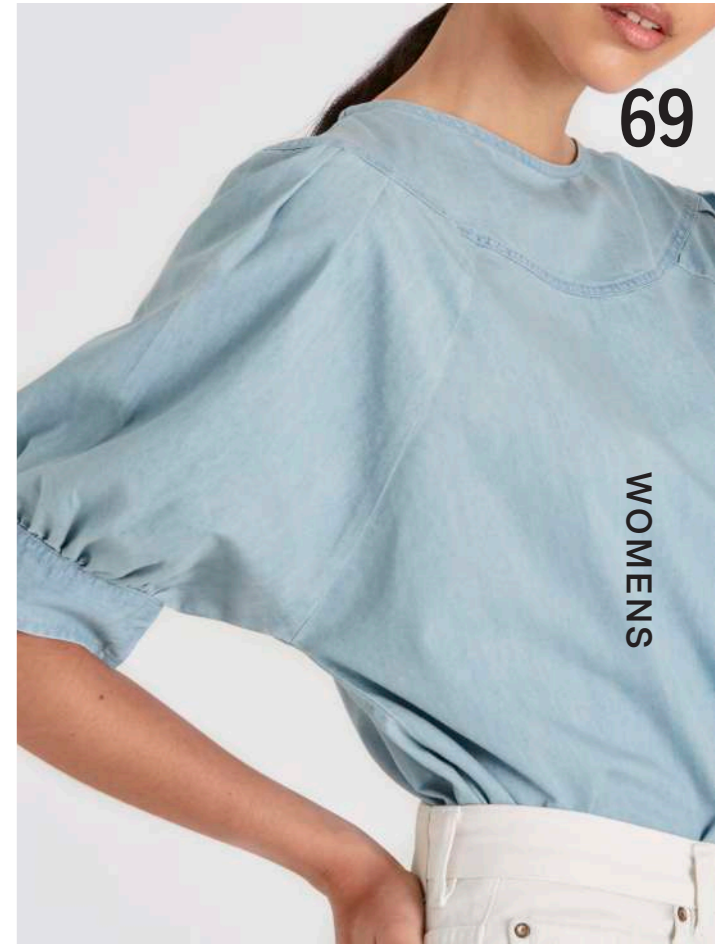
WOMENS



Puff-sleeve denim top. Our 'Kate' top is made from soft cotton denim. Designed in a regular fit with a round neck yoke and a back button fastening. Short puff sleeves with buttoned cuffs make this top an elevated basic.



KATE



69

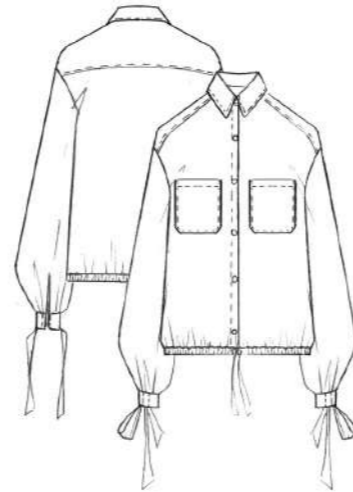
WOMENS

SKU: SS21\_W16\_KATE\_TOP  
FABRIC: SS21\_LIGHTWBLUDEN  
COMPOSITION: 100% COTTON

## TAMMY



Long sleeve linen shirt. Our 'Tammy' shirt is cut from breathable melange linen. Button down style with patch pockets. A relaxed fit drawstring channel at the hem. Buttoned cuffs with ties that can be knotted or left draped.



**SKU:** SS21\_W22\_TAMMY\_SHIRT  
**FABRIC:** SS21\_SKYLIN  
**COMPOSITION:** 55% LINEN, 45% COTTON

## CELIA



Sleeveless denim top. Our 'Celia' top is cut from light cotton denim. Raglan sleeve style with softly gathered volume at the shoulder for blouson. Front button through placket. Mocked roll up sleeve.



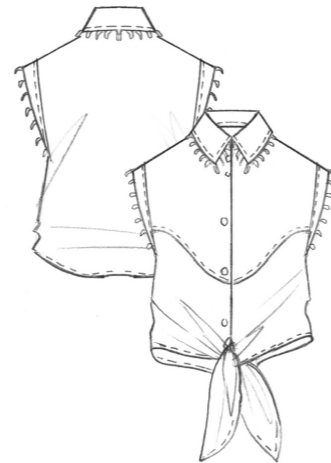
**SKU:** SS21\_W12\_CELIA\_TOP  
**FABRIC:** SS21\_MIDWHDEN  
**COMPOSITION:** 100% COTTON

70

## KENDAL



Sleeveless tie front top. The 'Kendal' top is cut from soft denim. A button down shirt front ties that can be knotted at the waist. Cotton trim insert along the collar and armhole.



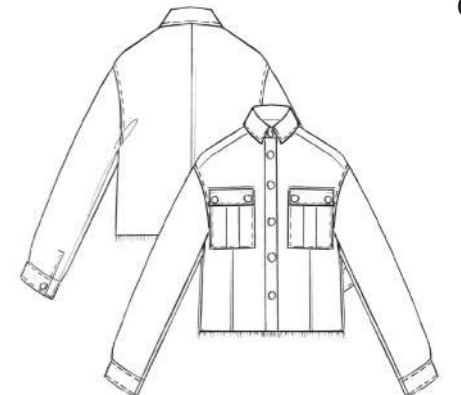
**SKU:** SS21\_W23\_KENDAL\_TOP  
**FABRIC:** SS21\_MIDWHDEN  
**COMPOSITION:** 100% COTTON

WOMENS

## CELINA



White Denim jacket. Our 'Celina' jacket is cut from mid-weight cotton denim. Box fit with a slightly cropped hem and oversized graphic pockets. Worked to have a lived-in worn effect with frayed edges. Contrasting black buttons.



**SKU:** SS21\_W75\_CELINA\_JACKET  
**FABRIC:** SS21BIANCADENSERG  
**COMPOSITION:** 100% COTTON

71

WOMENS

# OLIVIA

DEADSTOCK

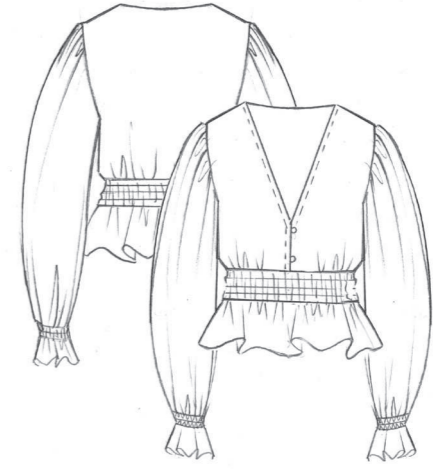
Ruffled sheer midi dress. Our 'Olivia' dress is made from a tie-dye inspired viscose print. Featuring a shirred bodice and playful tiered panels. Upper calf length.

**SKU:**  
**FABRIC:** SS21\_INKTIEDYE  
**COMPOSITION:** 100% POLYESTER, SLUB PRINT



# JANIS

V-neck cropped shirred blouse. Our 'Janis' blouse is made from a tie-dye inspired viscose print. Featuring a feminine silhouette it has a shirred bodice with a plunging neckline and billowing sleeves.



DEADSTOCK



**SKU:** SS21\_W15\_JANIS\_BLOUSE  
**FABRIC:** SS21\_INKTIEDYE  
**COMPOSITION:** 100% POLYESTER, SLUB PRINT



74



75

WOMENS

WOMENS



### TAMARA

Denim midi dress. Our 'Tamara' dress is utility inspired and made from soft cotton-tencel blend. Round neck with button fastening at the shoulder. Loose fitting with a swiny skirt it comes with a wrap belt that can be cinched in. Upper calf length.

**SKU:** SS21\_W7\_TAMARA\_DRESS

**FABRIC:** SS21\_DARKWBLUDEN

**COMPOSITION:** 32% TENCEL

68% COTTON

## ARABELLA



Tie-dye denim shirt. The 'Arabella' shirt is made from lightweight indigo tie-dye cotton. Relaxed spread collar with contemporary straight sleeves that stop above the wrist.



**SKU:** SS21\_W72\_ARABELLA\_SHIRT  
**FABRIC:** SS21TDINKBLU  
**COMPOSITION:** 100% COTTON

76

## BIANCA



Denim day jacket. Our 'Bianca' jacket is utility inspired and cut from soft cotton denim. Short boxy sleeves, a neat collar and oversized pockets. Pull through channel at the waist.



**SKU:** SS21\_W1\_BIANCA\_JACKET  
**FABRIC:** SS21\_COTSERGEDENIM  
**COMPOSITION:** 100% COTTON

WOMENS



## AMY

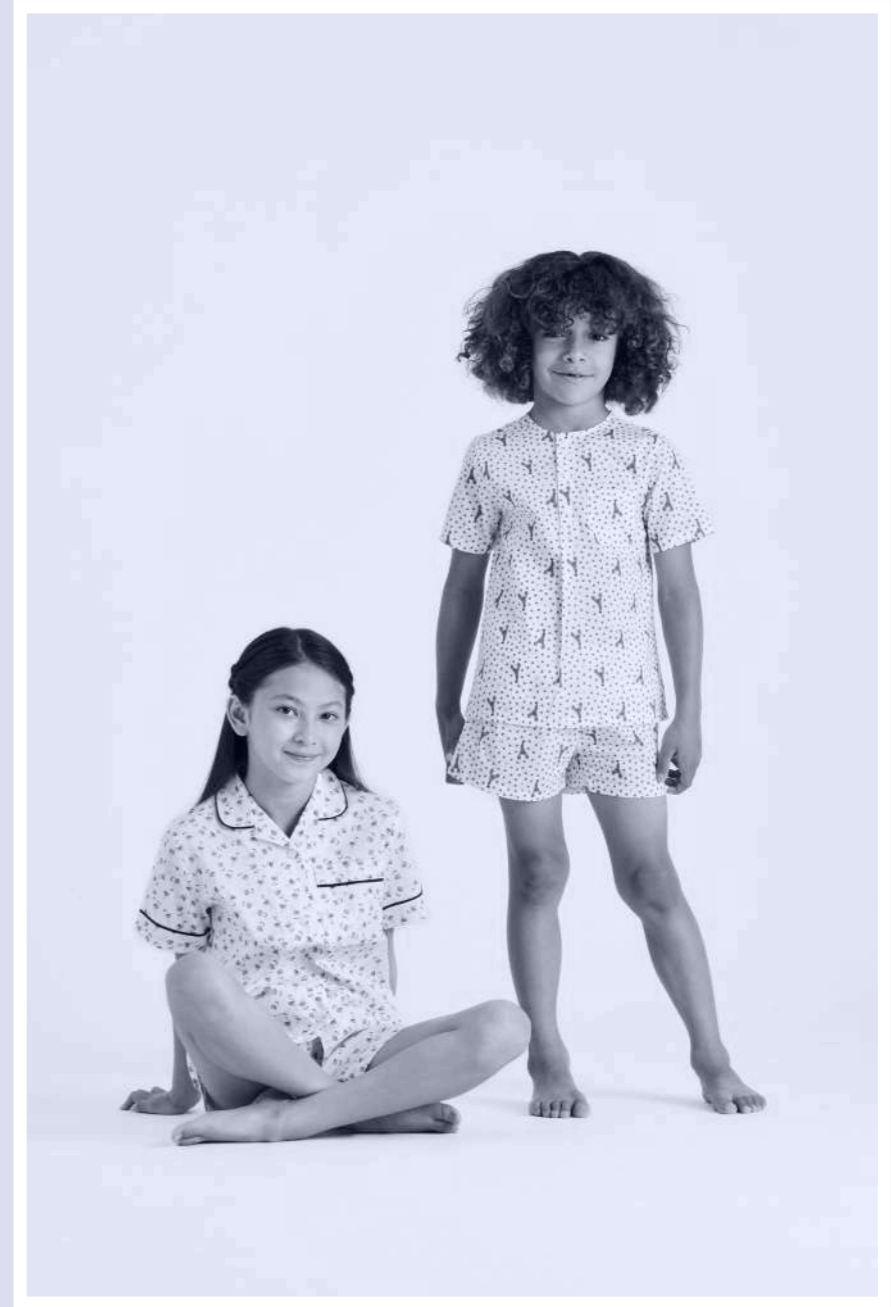
Long sleeve linen blend shirt. Our 'Amy' shirt is cut from breathable indigo linen. Long and easy cut with a grand-dad collar. Front bib with button placket and pleat below. Single patch pocket. Back yoke panel. Split square hem.

**SKU:** SS21\_W17\_AMY\_SHIRT  
**FABRIC:** SS21\_INDIGOCOT  
**COMPOSITION:** 65% LINEN,  
35% COTTON

77

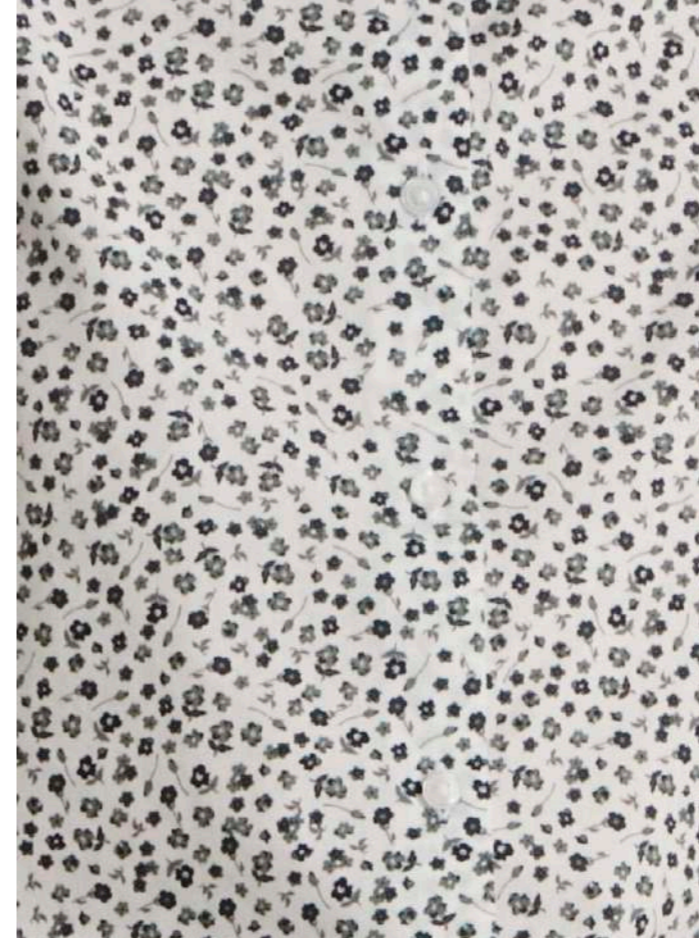
WOMENS

# KIDS



80

KIDS

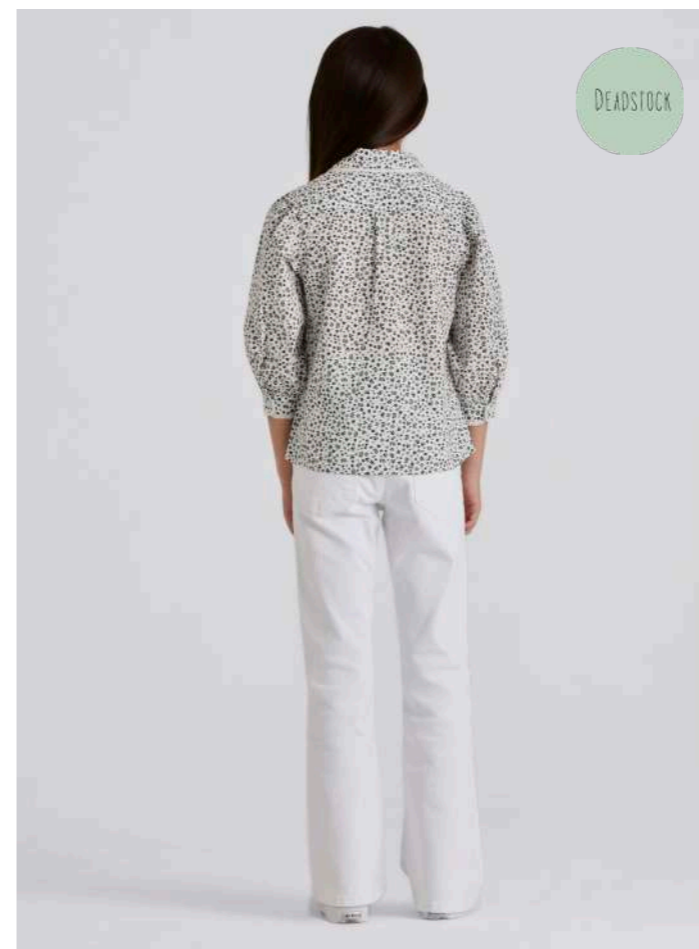


**HERO**

Floral ditsy Shirt. Our 'Annie' shirt is retro inspired and made from crisp printed cotton. An iconic style with 3/4 billowing puff sleeves and buttoned cuffs. Cotton trim insert along the edge of the collar and cuffs.



**ANNIE**



81

KIDS



**SKU:** SS21\_W29\_ANNIE\_TOP

**FABRIC:** SS21\_FLORADITSY

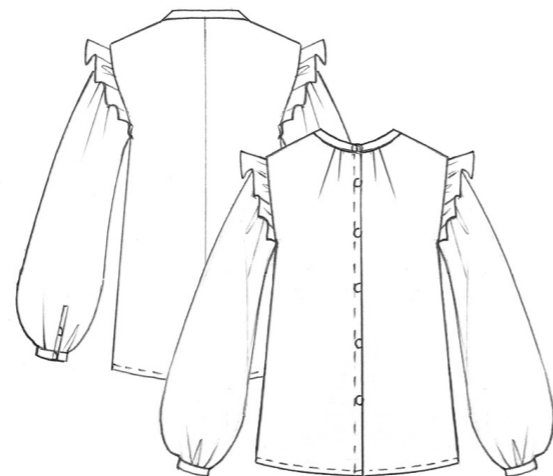
**COMPOSITION:** 70% COTTON, 27% POLYESTER, 3% SPANDEX

# PIA



Poplin frill shirt. Our 'Pia' shirt is made from crisp white cotton poplin. An elegant style with soft billowing sleeves and buttoned cuffs. Neat mandarin collar and gathered frill insert at the shoulders.

**SKU:** SS21\_W68\_PIA\_LS SHIRT  
**FABRIC:** SS21\_BIANCAPOP  
**COMPOSITION:** 100% COTTON



# KIKI

Baby Girl Romper. Our 'Kiki' romper is made from 70s inspired printed cotton. Featuring a front button placket, it has a balloon shape trouser with delicate cotton lace trim insert.



**SKU:** SS21\_W25\_KIKI\_ROMPER  
**FABRIC:** SS21\_SWIRLDITSY  
**COMPOSITION:** 70% COTTON, 27% POLYESTER, 3% SPANDEX

# NINA



Shirtdress. The 'Nina' dress is made from pink gingham cotton plaid. Designed with a round yoke it has a button down placket and 3/4 balloon sleeves with functional cuffs.



**SKU:** SS21\_W27\_NINA\_DRESS  
**FABRIC:** SS21\_PINKGING  
**COMPOSITION:** 100% COTTON



# DIXIE

Drawstring Sleeveless top. Our 'Dixie' top is made from soft printed viscose. Relaxed gathered volume. With straps tying at the shoulders.

**SKU:** SS21\_W26\_DIXIE\_DRESS  
**FABRIC:** SS21\_BLUEFLORAVISC  
**COMPOSITION:** 100% COTTON

84

# PEGGY



Embroidered summer top. The 'Peggy' top is made from broderie anglaise and cotton lace trim insert. Featuring a summer silhouette it has a button down placket and a gathered waist.



**SKU:** SS21\_W28\_PEGGY\_TOP  
**FABRIC:** SS21\_BROANGLAISE  
**COMPOSITION:** 100% COTTON

85

KIDS

KIDS



**MASHA**

Short sleeve Pijama set. Our 'Masha' pijama set is made from printed cotton and navy piping detailing. The set features a short sleeve button through shirt and matching boxer shorts with elasticated waist.

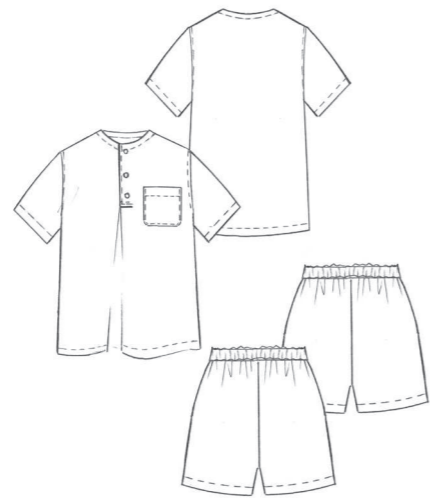
**SKU:** SS21\_W67\_MASHA\_PJS  
**FABRIC:** SS21\_DANCEFLAMINGO  
**COMPOSITION:** 70% COTTON, 27% POLYESTER, 3% SPANDEX



**JONI**

Boys' Pijama set. Our 'Joni' pijama set is made from printed cotton in a boxy shape. Collarless short sleeve shirt with a henley placket. Matching boxer shorts with elasticated waist.

**SKU:** SS21\_W34\_JONI\_PJS  
**FABRIC:** SS21\_DITSYLOBSTER  
**COMPOSITION:** 100% COTTON



DEADSTOCK

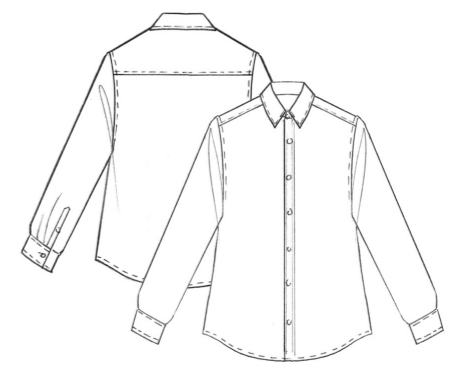


88

KIDS



Tartan plaid long sleeve shirt. The 'Jacomo' shirt is made from soft cotton plaid in playful hues of yellow and green. Designed for a regular fit it has a spread collar that together with the cuffs are lined in matching green cotton.



JACOMO



Deadstock

89

KIDS



SKU: SS21\_W58\_JACOMO\_LS SHIRT  
FABRIC: SS21\_YELLOTARTAN  
COMPOSITION: 100% COTTON

# DINOS JR



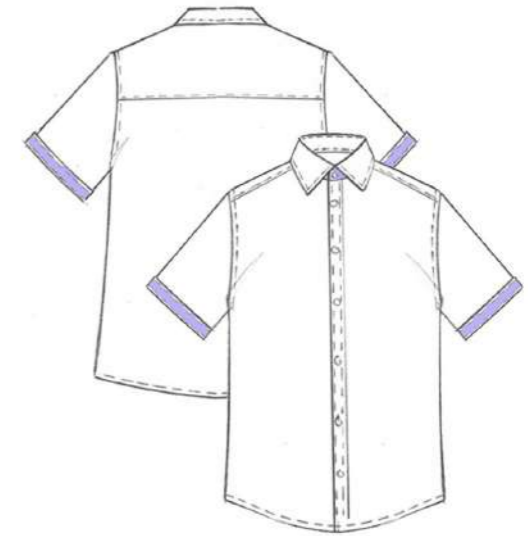
DEADSTOCK

Workwear denim jacket. Our 'Dinos Jr' jacket is made from denim in a classic boxy fit. A contemporary style with a front zip fastening, patch pockets and contrast white topstitching.

**SKU:** SS21\_W63\_DINOS\_JACKET  
**FABRIC:** SS21\_BLUSERGEDEN  
**COMPOSITION:** 100% COTTON



# CLINT



Micro tartan short sleeve shirt. The 'Clint' shirt is made from gingham check cotton with a playful feature of a denim undercollar and sleeves. Fit is regular.

DEADSTOCK



**SKU:** SS21\_W33\_CLINT\_SS SHIRT  
**FABRIC:** SS21\_MICROGING  
**COMPOSITION:** 100% COTTON

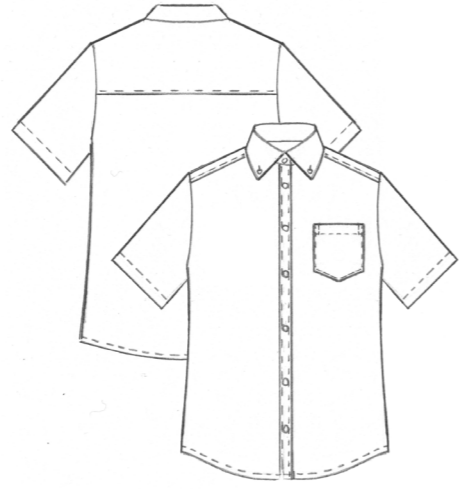
91

KIDS

90

KIDS

## DIMI JR



Button-down collar short sleeve shirt. The 'Dimi jr' shirt is made from mid-weight printed cotton. A classic style with a smart collar and a chest pocket.

DEADSTOCK



**SKU:** SS21\_W31\_DIMIR\_SS SHIRT  
**FABRIC:** SS21\_NAVYSPACEGEO  
**COMPOSITION:** 70% COTTON, 27% POLYESTER, 3% SPANDEX

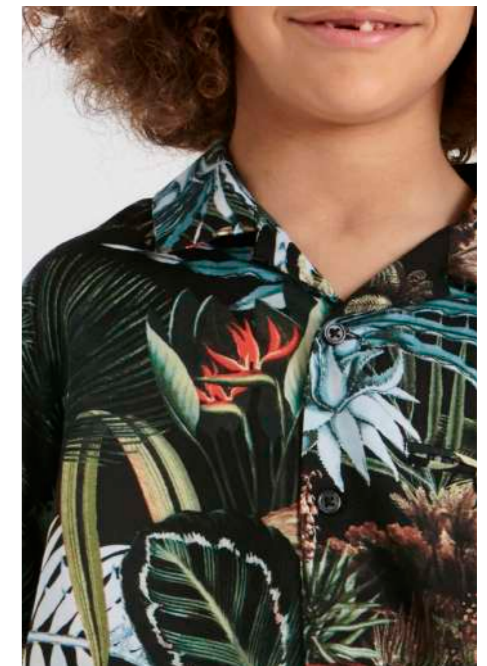
## BONITO



DEADSTOCK

Camp-collar short sleeve shirt. Our 'Bonito' shirt is made from printed viscose and designed for an oversized feel. It's comfortable and relaxed fit is enhanced by side slits.

**SKU:** SS21\_W59\_BONITO\_SS SHIRT  
**FABRIC:** SS21\_TROPICALVISC  
**COMPOSITION:** 100% VISCOSE AOP

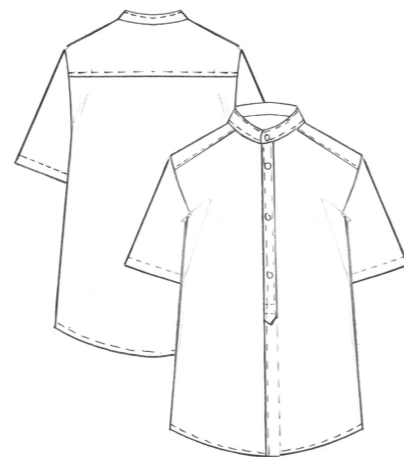


# BENJIE

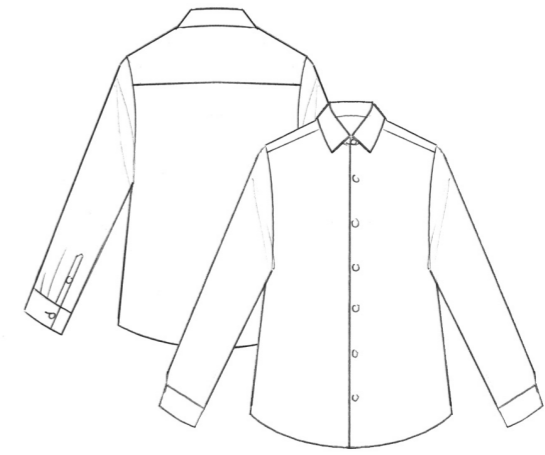


Pinstriped short sleeve shirt. The 'Benjie' shirt is made from white and blue striped cotton in a boxy shape. Designed with a neat mandarin collar and a button down placket it is a classic summer style.

**SKU:** SS21\_W32\_BENJIE\_SS SHIRT  
**FABRIC:** SS21\_BLUPINSTR  
**COMPOSITION:** 100% COTTON



# JEREMY JR



Regular fit long sleeve shirt. Our 'Jeremy Jr' shirt is made from lightweight pinstripe cotton. Designed for a preppy contemporary look it's collar and cuffs are made in white poplin.



**SKU:** SS21\_W61\_JEREMYJR\_LS SHIRT  
**FABRIC:** SS21\_BURGPINSTR  
**COMPOSITION:** 100% COTTON

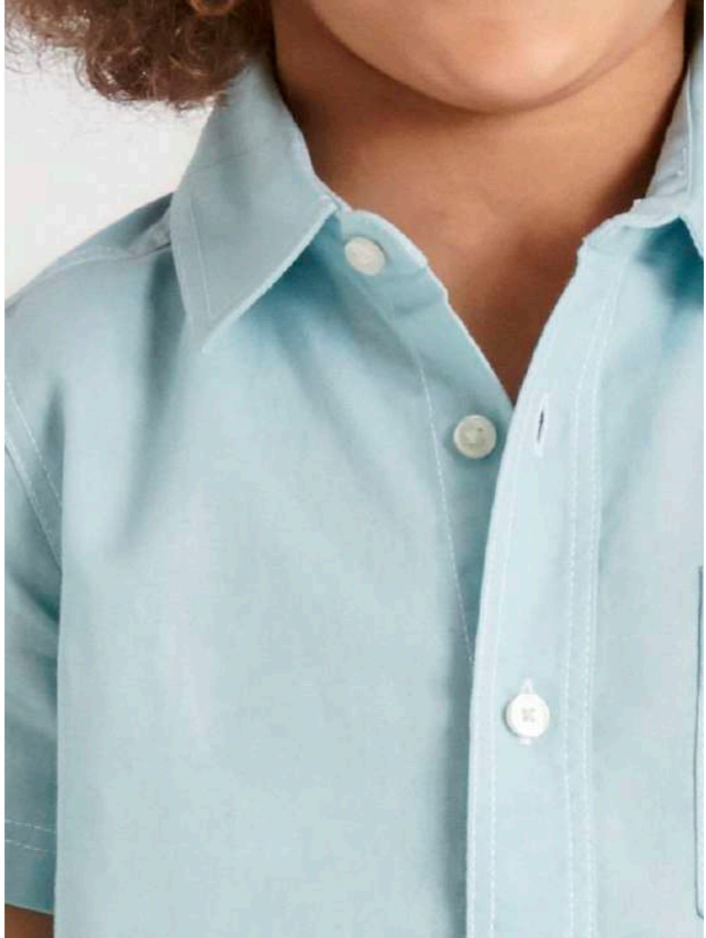
95

KIDS

94

KIDS

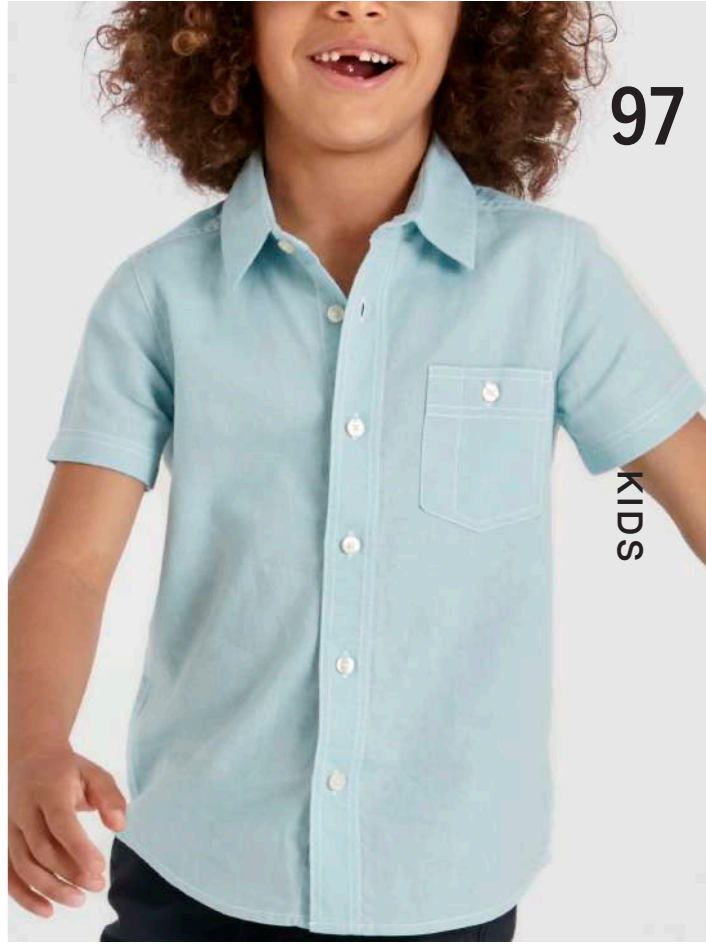
DEADSTOCK



Contrast stitch short sleeve Oxford shirt. Our 'Ferdy' shirt is made from Oxford cotton in a boxy fit. A contemporary style with contrast white topstitching, a button-down collar and a chest pocket.



FERDY



SKU: SS21\_W62\_FERDY\_SS SHIRT  
FABRIC: SS21\_VERDEOXF  
COMPOSITION: 100% COTTON

96

KIDS

97

KIDS



**THANK YOU**

**MG**

GARMENT DIVISION

[WWW.MOHAMMADIGROUP.COM](http://WWW.MOHAMMADIGROUP.COM)